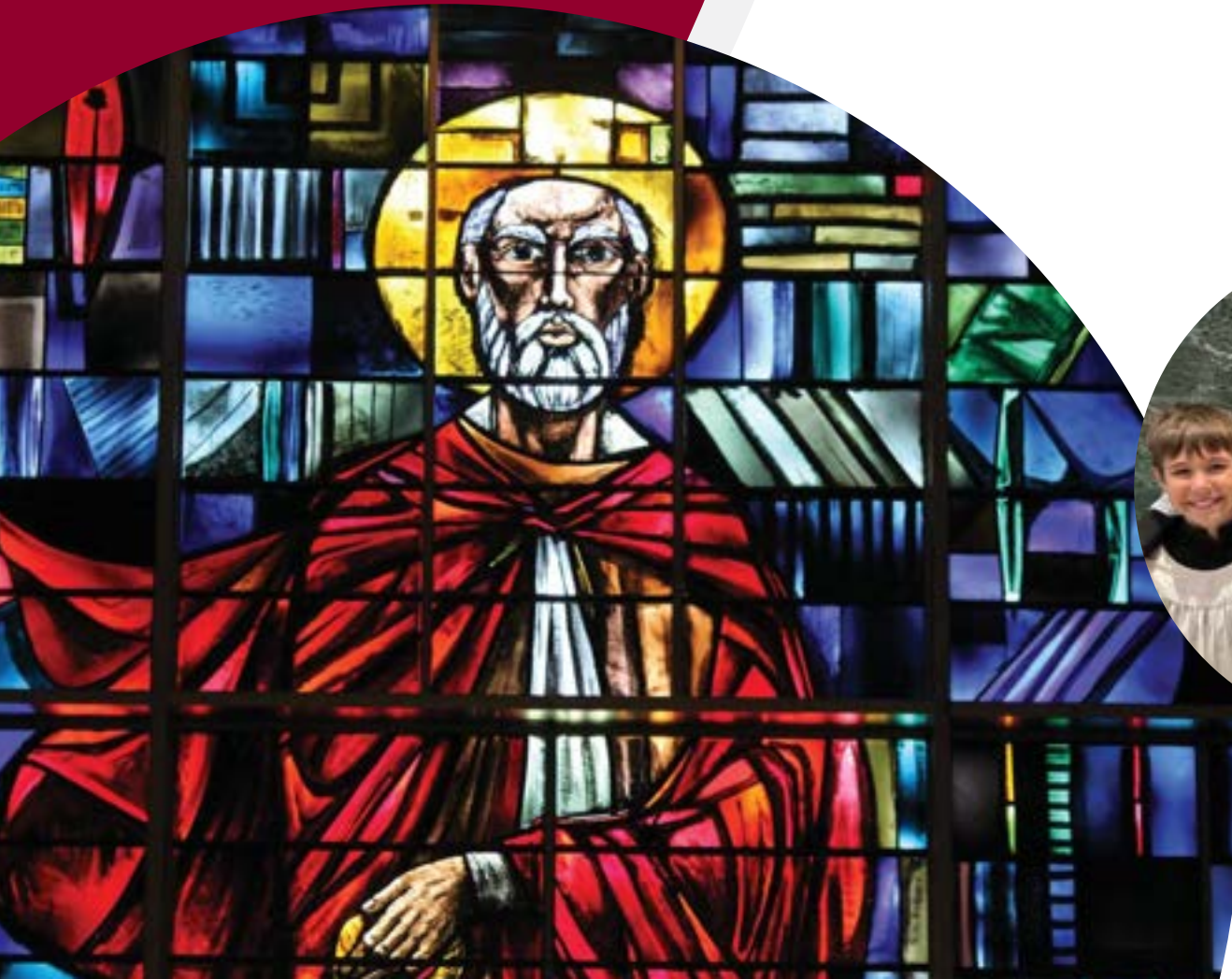




THOU ART PETER, AND UPON THIS ROCK I WILL BUILD MY CHURCH

# UPON *this* ROCK

*The Campaign  
to Build in Faith  
at St. Peter*





## DEAR LORD

We thank you for all that you have given to us, generous gifts of our time, talents and treasures.

As stewards of these gifts, we ask that you give us the grace to continue to be stewards of these gifts as we meet the challenges of our capital campaign.

You have blessed us with so much, and we ask that you give us the grace to respond generously for the graces of the past, the graces of the present and the graces of the future as we help St. Peter to grow as a people of God here in Quincy and as true stewards of your many gifts.

May each of us respond to the challenges of this campaign, knowing that you will continue to bless us with these same gifts in a far more generous way than we ever need and want as we help to grow your kingdom here on Earth.

We ask all these things through our Lord, the giver of all gifts especially our faith, hope and love

*Amen.*



## A LETTER FROM MSGR. ENLOW



*“You are Peter and  
UPON THIS ROCK  
I will build my church.”*

**T**hese words of Jesus to Peter reflect Jesus’ intention of building his Church upon this apostle, the rock of faith in spite of persecution, struggles and challenges that would lie ahead. And Peter, the rock, would meet them, including his own death on an upside-down cross. How appropriate that our church, St. Peter Church, was named after this rock-solid foundation.

When faced with challenges and struggles, we always remembered this rock upon which Jesus built his Church. In 1945, the structure of our church faced a tremendous challenge: a tornado that destroyed much of our foundation. Blessed with the fortitude of being built upon this rock, our parishioners picked up the pieces, razed the old church and built another structure on 25th and Maine. Thus, the rock of St. Peter was laid anew.

Through the years, our campus has grown as our parishioners met all challenges head-on. Recognizing that education is an evangelization tool, St. Peter met the needs of enrollment and educational challenges. Now in 2024, as we are still the church built upon the rock with Peter as the foundation, we are faced with another challenge: a campaign to enhance our campus and provide greater security for the young people entrusted to us. We are calling this effort *Upon this Rock: The Campaign to Build in Faith at St. Peter*.

Through this campaign, we will add a cafeteria that is connected to the main school, which will keep our students more secure – always one of our priorities. With the students dining in the new cafeteria, we can use the basement of our church as a parish center, with rooms for meetings and a cafeteria for funeral luncheons and other meals. These projects will advance our parish into the next generation, giving us space for formation and continuing education for young and old.

I ask you to use this campaign to meet the challenges ahead as we have done in the past, with a church built upon Peter the Rock. Please read this case statement and prayerfully consider how you can support this campaign, our parish and our school.

Gratefully,

Msgr. Leo Enlow  
Pastor



# OUR VISION



## **Build a New Cafeteria | \$5.1 million**

Our new school cafeteria will provide so much for the St. Peter campus. It will make our students safer and more comfortable, and it will alleviate many of our parish's space issues. The new cafeteria will:

- More than double our current cafeteria space at 9,600 square feet, which will allow us to feed more students in fewer lunch periods and provide space for larger class activities, extracurricular activities and meetings for both school and church.
- Connect with the main school building, and then to Seton Hall, making travel among the buildings safer and quicker for students and teachers.
- Allow us to renovate the church basement into a parish center, which our parish has never really had.
- Free up the school gymnasium, which is used for funeral luncheons.

The primary goal and the focus of the *Upon this Rock: The Campaign to Build in Faith at St. Peter* is to raise \$5.1 million for the new cafeteria.

***If we exceed that goal – WHEN we exceed that goal – we will pursue the following projects. >>>***

## Create a Parish Center | \$500,000

When the new school cafeteria opens, the cafeteria space in the basement of the church will be renovated into a parish center. This parish center will be a cafeteria space for funeral lunches and a gathering space for parish events and meetings. We will make the space more meeting-friendly by:

- Installing movable walls to section the large area into smaller, multiple meeting rooms.
- Enhancing the technology with upgraded internet and wireless capabilities, and adding a new sound system.
- Electrical upgrades and updates.
- Updating existing spaces and rooms.
- Modernizing and updating the restroom facilities.

## Add Classrooms | \$4.5 million

We don't yet know what the future will bring the Catholic schools in Quincy. But no matter what QCES decides, St. Peter School needs a new cafeteria and more classrooms.

## *The only question is: WHEN will we expand?*

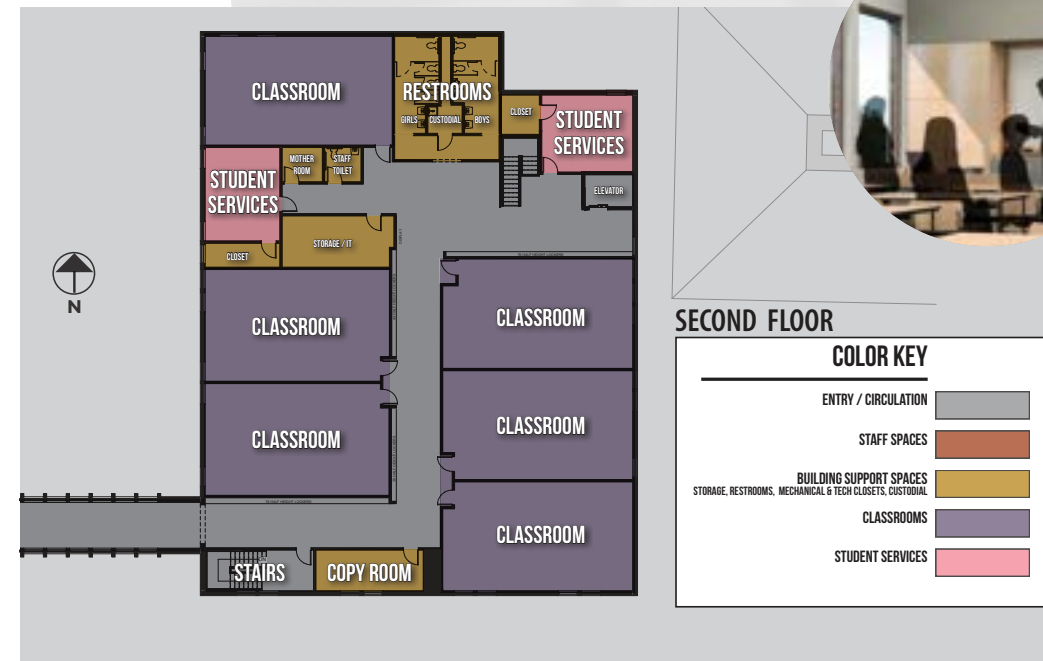
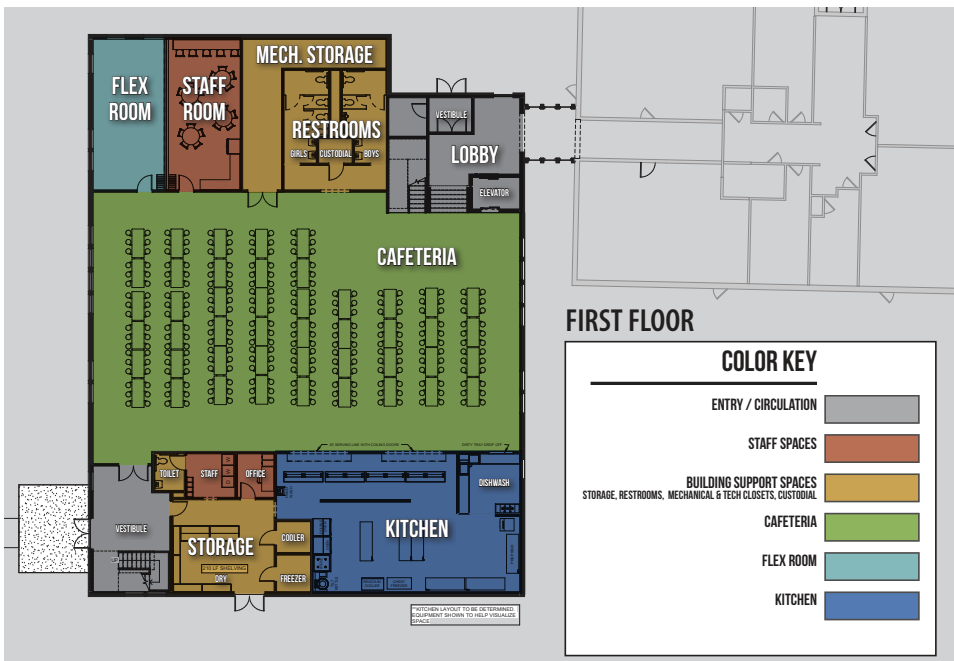
We are growing, and we expect to continue growing. Our classrooms are at 92% occupancy or higher, and any spike in enrollment – QCES-driven or otherwise – will cause overcrowding and logistical issues. We want to:

- Build four to six new classrooms on the second level above the new cafeteria.
- Add designated rooms for specials including art, music and a library.
- Provide meeting space for school groups.



## Support Diocesan Centennial Campaign | 10% of funds raised

The campuses at the Cathedral of the Immaculate Conception, Catholic Pastoral Center and the Villa Maria Retreat Center need to be repaired and refurbished. These facilities welcome guests from throughout the diocese for sacraments, formation and retreats, and they need to be more welcoming and hospitable. The diocesan campaign also will establish a fund to provide for the ongoing maintenance and long-term diocesan campus capital needs.



TIERED CAMPAIGN GOALS



CELEBRATION GOAL:  
\$5.6 MILLION

\$5.1 million for  
new cafeteria  
+ 10% for diocesan  
*Centennial Campaign*

CHALLENGE GOAL:  
\$6.16 MILLION

\$5.1 million  
for new cafeteria  
+ \$500,000  
for new parish center  
+ 10% for diocesan  
*Centennial Campaign*



PINNACLE GOAL:  
\$11.1 MILLION

\$5.1 million  
for new cafeteria  
+ \$500,000  
for new parish center  
+ \$4.5 million  
for new classrooms  
+ 10% for diocesan  
*Centennial Campaign*



## WAYS TO GIVE

Selecting the best gift plan depends on your personal financial situation and goals. As tax laws are always changing and each individual's situation is unique, donors are encouraged to consult with their financial advisors to determine which method of contributing is most beneficial.

There are many options to help meet your needs while supporting St. Peter in a meaningful way. Pledges are commitments made in good faith but are not legally binding. You may want to consider stretching pledges over a three-year period to maximize the total amount of your support. This commitment can be fulfilled through monthly, quarterly, semiannual or annual installments.

**We encourage all donors to consider a 10-20% initial payment to begin your commitment.**

**Gifts made by cash or check are the most common** and will allow St. Peter to address its immediate needs. Checks should be made payable to St. Peter. Additionally, while the needs of the *Upon this Rock: The Campaign to Build in Faith at St. Peter* effort are urgent, we will gratefully accept gifts in various forms, including:

- Securities including stocks, bonds and mutual funds
- Real estate
- Gifts in kind
- Corporate matching gifts
- Deferred or planned gifts
- Will or revocable "living" trust
- Charitable remainder trust
- Life insurance
- Retirement plans
- Qualified charitable distribution (QCD), which allows individuals who are 70½ years or older to donate up to \$100,000 directly from a taxable IRA instead of taking their required minimum distributions.



*This information is not intended as legal advice. You are advised to consult your own qualified professional advisor for specific recommendations.*

<b>TOTAL GIFT</b>	<b>10% Initial Investment</b>	<b>Balance</b>	<b>Monthly</b>	<b>Quarterly</b>	<b>Semiannual</b>	<b>Annual</b>
\$300,000	\$30,000	\$270,000	\$7,500	\$22,500	\$45,000	\$90,000
\$240,000	\$24,000	\$216,000	\$6,000	\$18,000	\$36,000	\$72,000
\$150,000	\$15,000	\$135,000	\$3,750	\$11,250	\$22,500	\$45,000
\$100,000	\$10,000	\$90,000	\$2,500	\$7,500	\$15,000	\$30,000
\$75,000	\$7,500	\$67,500	\$1,875	\$5,625	\$11,250	\$22,500
\$60,000	\$6,000	\$54,000	\$1,500	\$4,500	\$9,000	\$18,000
\$45,000	\$4,500	\$40,500	\$1,125	\$3,375	\$6,750	\$13,500
\$30,000	\$3,000	\$27,000	\$750	\$2,250	\$4,500	\$9,000
\$15,000	\$1,500	\$13,500	\$375	\$1,125	\$2,250	\$4,500
\$6,000	\$600	\$5,400	\$150	\$450	\$900	\$1,800
\$3,600	\$360	\$3,240	\$90	\$270	\$540	\$1,080
\$1,800	\$180	\$1,620	\$45	\$135	\$270	\$540

# CAMPAIGN LEADERSHIP

## ***Pastor***

Msgr. Leo Enlow

## ***Parochial Vicar***

Fr. Zach Samples

## ***General Chairs***

John and Kimberly Johannes  
Lydia Miller  
David and Theresa Oakley  
Thomas and Kimberly Strieker

## ***Campaign Committee***

Matthew and Cassandra Bainbridge  
James and Kathleen Citro  
Jack and Lauren Cornell  
Andrew and Nicole Genenbacher  
Justin and Michelle Haubrich  
Jason and Rebecca Knuffman  
John and Carrie Lavery  
William and Sharon Mays  
Charles and Jamie Scholz  
Christopher and Monica Scholz  
Kyle and Kimberly Venvertloh  
Stephen and Linda Wavering

## ***Honorary Chairs***

B.T. 'Ted' Kemner  
George and Mary Nell Meyer  
James and Martha Rapp

## ***Development Counsel***

Steier Group



ST. PETER CHURCH  
2600 Maine Street  
Quincy, IL 62301  
church@cospq.org

